

CattronLink™

MANAGEMENT SOFTWARE

ENABLING PERFORMANCE, MANAGEMENT AND MAINTENANCE

HIGHLIGHTS

CattronLink Management Software enables continuous performance and simplified feature upgrades on a variety of Cattron wireless remote control systems via a Bluetooth® link.

- CattronLink may be operated locally or remotely with the assistance of a member of the Cattron support team.
- Enables operator control units to be kept as a spare for multiple cranes or machines.
- All OCU and MCU access is carried out over a Bluetooth link from a laptop or PC running the Cattron Management Software.

FEATURES

CattronLink is designed to be an efficient and easy-to-use wireless programming tool for operators.

- Closed-box integration for CattronLink requires a Windows 10 PC equipped with a Bluetooth link.
- Provides ability to upgrade firmware.
- Loading or changing of configuration parameters such as Frequency, Address, OCU Timeout, button / switch / relay allocation, etc.
- Examine device status including switch and relay totalizers.
- Review error logs.
- A license key is not required for basic functionality - Frequency, Time Share Pattern and OCU Timeout).
- CattronLink's functionality is implemented as a series of plug-ins. Training and/or authorization may be required to access the plug-in.

AVAILABILITY

CattronLink is available with the following systems:

- Remtron™ 325
- Remtron™ 611
- Remtron™ 411
- Cattron™ 10R and 17R MCU
- Safe-D-Stop™





CATTRONLINK™ MANAGEMENT SOFTWARE

FUNCTIONALITY

Firmware Upgrades

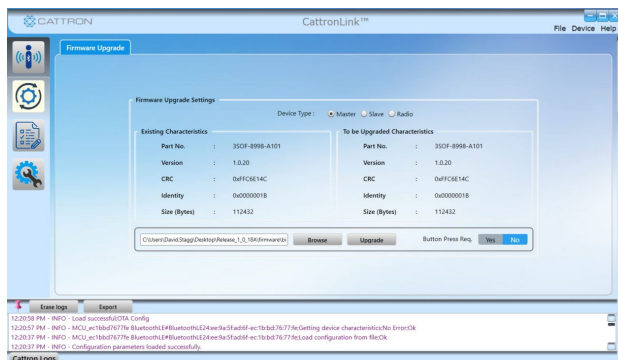
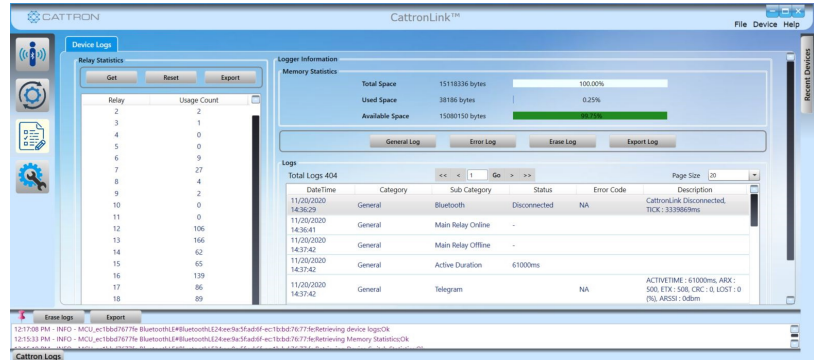
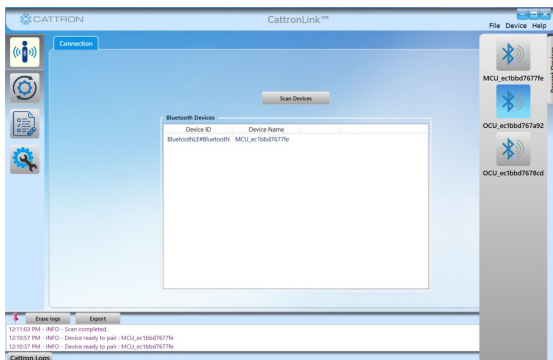
As new features are released, the firmware can be upgraded to make the feature available.

Upgradeable Configuration

A flexible and easily upgradeable configuration concept enables OCU's to be kept as a spare for multiple cranes or machines.

OCU and MCU Access

All OCU and MCU access is carried out via a Bluetooth link from a laptop or PC running the CatatronLink software utility.



North America: +1.234.806.0018 | Sales.US@Catatron.com
Europe: +49.2151.4795.0 | Sales.EU@Catatron.com
UK: +44.1932.238121 | Sales.UK@Catatron.com
South America: +55.19.3518.7030 | Sales.BR@Catatron.com
Asia: Sales.CN@Catatron.com

catatron.com

EN-2021-01-V1



Any information furnished by Catatron™ and its agents is believed to be accurate and reliable. All specifications are subject to change without notice. Responsibility for the use and application of Catatron products rests with the end user since Catatron and its agents cannot be aware of all potential uses. Catatron makes no warranties as to non-infringement nor as to the fitness, merchantability, or sustainability of any Catatron products for any specific or general uses. Catatron Holdings, Inc., or any of its affiliates or agents shall not be liable for incidental or consequential damages of any kind. All Catatron products are sold pursuant to the Terms and Conditions of Sale, a copy of which will be furnished upon request. When used as a tradename herein, Catatron means Catatron Holdings, Inc. or one or more subsidiaries of Catatron Holdings, Inc. Catatron™, corresponding logos, and other marks are trademarks or registered trademarks of Catatron Holdings, Inc. Other marks may be the property of third parties. Nothing herein provides a license under any Catatron or any third party intellectual property right.