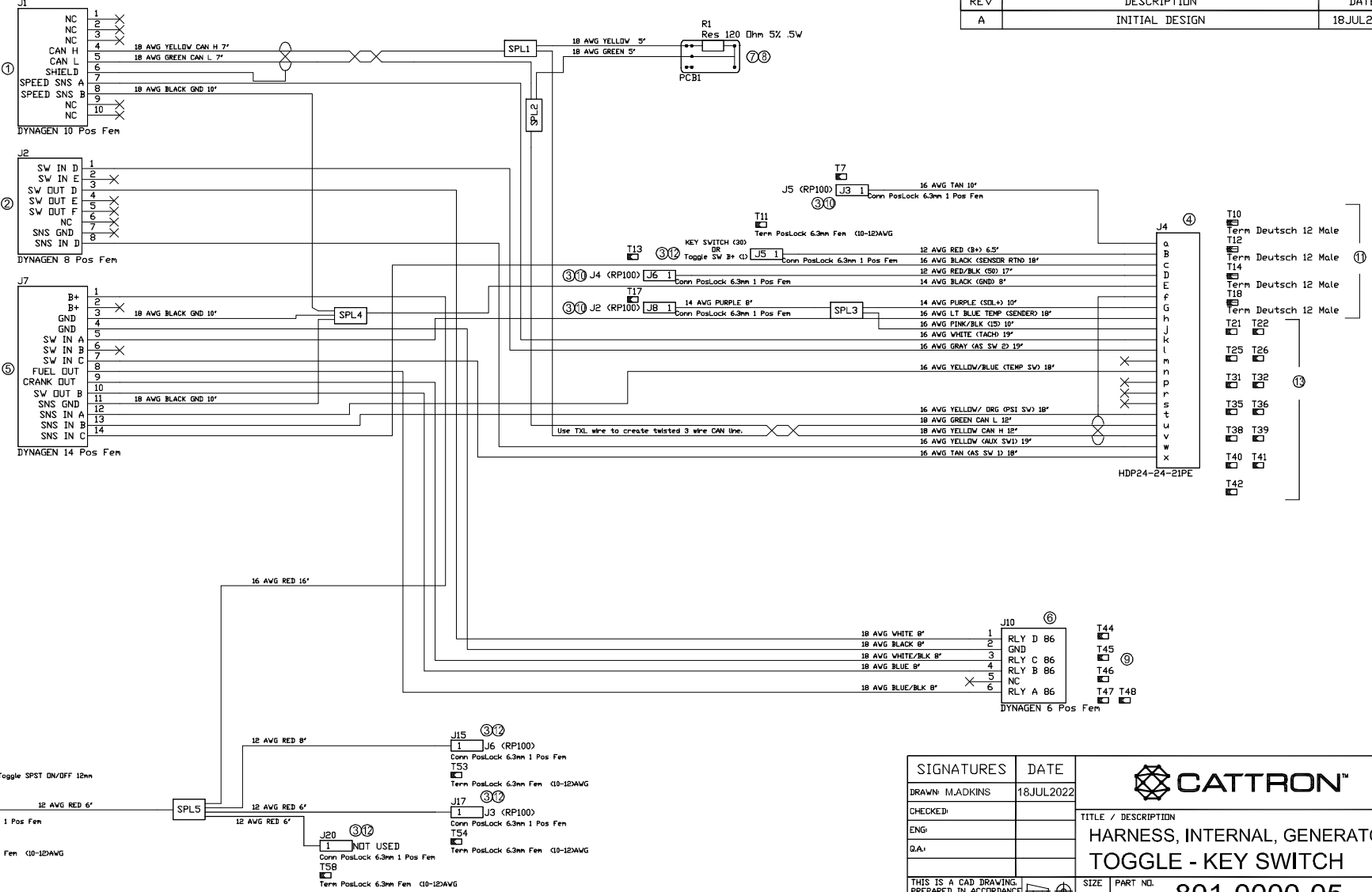


| REVISIONS | | |
|-----------|----------------|-----------|
| REV | DESCRIPTION | DATE |
| A | INITIAL DESIGN | 18JUL2022 |

- T1
- T2
- T3
- T4
- T5
- T6
- T7
- T8
- T9
- T10
- T11
- T12
- T13
- T14
- T15
- T16
- T17
- T18
- T19
- T20
- T21
- T22
- T23
- T24
- T25
- T26
- T27
- T28
- T29
- T30
- T31
- T32
- T33
- T34
- T35
- T36
- T37
- T38
- T39
- T40
- T41
- T42
- T43
- T44
- T45
- T46
- T47
- T48



- T10 Term Deutsch 12 Male
- T11
- T12
- T13
- T14 Term Deutsch 12 Male
- T15
- T16
- T17 Term Deutsch 12 Male
- T18
- T19
- T20
- T21
- T22
- T23
- T24
- T25
- T26
- T27
- T28
- T29
- T30
- T31
- T32
- T33
- T34
- T35
- T36
- T37
- T38
- T39
- T40
- T41
- T42

| | | |
|--|------------|--|
| SIGNATURES | DATE | |
| DRAWN: M.ADKINS | 18JUL2022 | |
| CHECKED: | | TITLE / DESCRIPTION |
| ENG: | | HARNES, INTERNAL, GENERATOR |
| QA: | | TOGGLE - KEY SWITCH |
| THIS IS A CAD DRAWING. PREPARED IN ACCORDANCE WITH ANSI Y14. | | SIZE B PART NO. 801-0000-05 |
| DO NOT SCALE DWG. | | SCALE NTS DRAWING NO. 9D02-801-0000-05 |
| SHEET 1 of 3 | REVISION A | |

THIS DRAWING IS THE PROPERTY OF CATTRON. IT IS TO BE USED ONLY FOR THE PROJECT AND EQUIPMENT SPECIFICALLY IDENTIFIED HEREIN. NO PART OF THIS DRAWING IS TO BE REPRODUCED OR TRANSMITTED IN ANY FORM OR BY ANY MEANS, ELECTRONIC OR MECHANICAL, INCLUDING PHOTOCOPYING, RECORDING, OR BY ANY INFORMATION STORAGE AND RETRIEVAL SYSTEM, WITHOUT THE WRITTEN PERMISSION OF CATTRON. CATTRON, THE CATTRON LOGO, AND ALL CONFIDENTIALITY AGREEMENTS BETWEEN CATTRON, NORTH AMERICA, INC. AND THE RECEIVER OR USER OF THIS INFORMATION. © COPYRIGHT CATTRON, NORTH AMERICA, INC. 2016