

SIAMnet Diagnostic System

SIAMnet™

SIAMnet™ REMOTE NETWORK MONITORING AND CONFIGURATION

HIGHLIGHTS

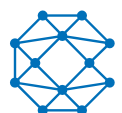
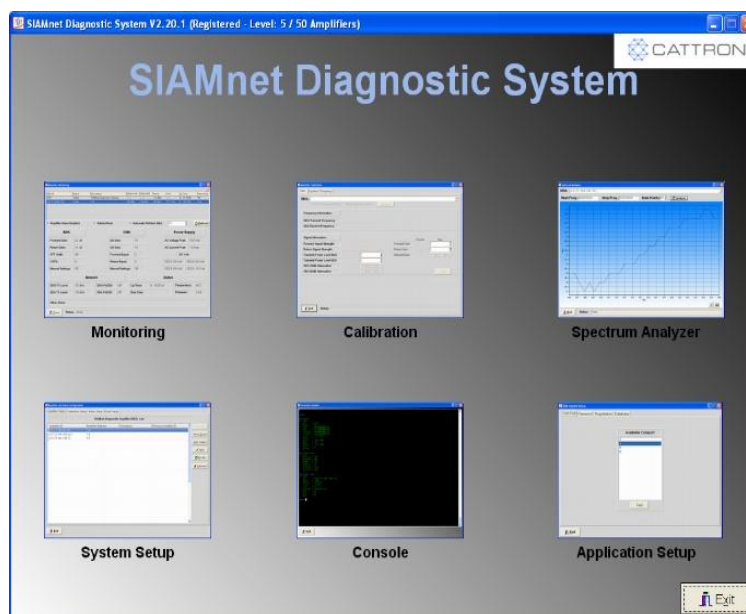
- SIAMnet Diagnostic Adapter (SDA) - an integral part of the Bi-Directional amplifier which monitors and controls its operating parameters
- SIAMnet Diagnostic Gateway (SDG) - links the SIAMnet network with the Internet
- SIAMnet Diagnostic Manager (SDM) - man-machine interface software
Runs on Windows®, requires SQL™ Server run time version and an Internet connection

FEATURES

- The SIAMnet diagnostic system monitors and configures the SIAMnet system remotely, inside or outside the mine
- Downtime is reduced due to ease of access to the SIAMnet system
- There is no need to travel to the amplifier to configure or troubleshoot the system unless the communication infrastructure is damaged
- The integrated spectrum analyzer software troubleshoots the system remotely
- Up to eight systems can be controlled from a single server installation
- No need to interrupt the vehicle traffic thus minimum impact on production

APPLICATIONS

- Any new or existing SIAMnet installation





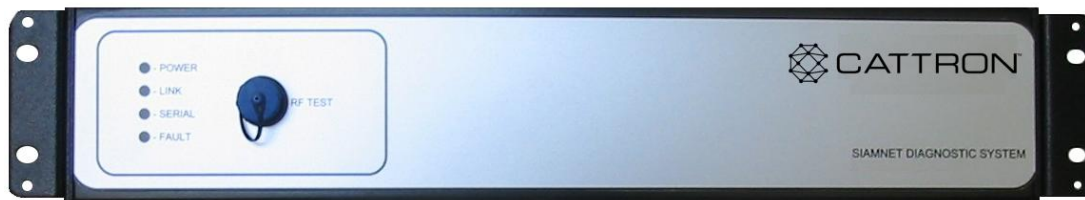
TECHNICAL DATA AND SPECIFICATIONS

ELECTRICAL DATA

Electrical Power	110–220 VAC
	50–60 Hz
RF Power	-10 to -40 dBm
Impedance	75 Ohm
Operating Band	806–870 MHz & 5–300 MHz
Channel Bandwidth	200 KHz
Termination	F female CATV splitter compatible
Interface Ports	RS232 or ethernet
Throughput	38.4 kbps

MECHANICAL DATA

Dimensions	19" x 3.5" x 13"
Weight	8 lbs / 3.6 kg
Temperature	-40 to +60°C



North America: +1.234.806.0018 | Sales.US@Cattron.com
 Europe: +49.2151.4795.0 | Sales.EU@Cattron.com
 UK: +44.1932.238121 | Sales.UK@Cattron.com
 South America: +55.19.3518.7030 | Sales.BR@Cattron.com
 Asia: Sales.CN@Cattron.com

cattron.com

9A06-S-SDS-A001

Any information furnished by Cattron™ and its agents is believed to be accurate and reliable. All specifications are subject to change without notice. Responsibility for the use and application of Cattron products rests with the end user since Cattron and its agents cannot be aware of all potential uses. Cattron makes no warranties as to non-infringement nor as to the fitness, merchantability, or sustainability of any Cattron products for any specific or general uses. Cattron Holdings, Inc., or any of its affiliates or agents shall not be liable for incidental or consequential damages of any kind. All Cattron products are sold pursuant to the Terms and Conditions of Sale, a copy of which will be furnished upon request. When used as a trademark herein, Cattron means Cattron Holdings, Inc. or one or more subsidiaries of Cattron Holdings, Inc. Cattron™, corresponding logos, and other marks are trademarks or registered trademarks of Cattron Holdings, Inc. Other marks may be the property of third parties. Nothing herein provides a license under any Cattron or any third party intellectual property right.

