

# Messenger 600

## WIRELESS CLOUD-BASED MONITORING SYSTEM

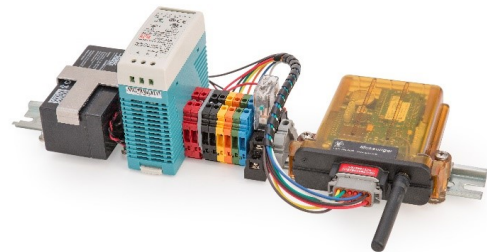
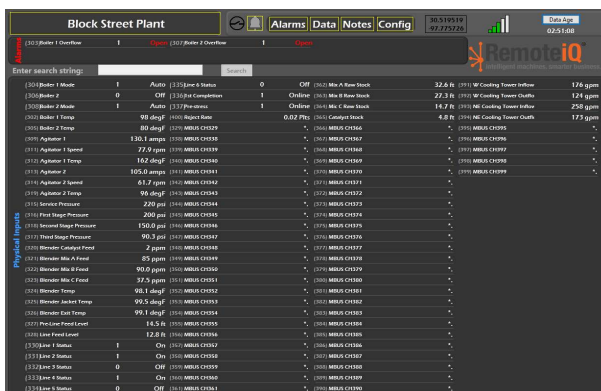
### MUNICIPAL, INDUSTRIAL, OIL AND GAS AND POWER

#### HIGHLIGHTS

- The Messenger 600 is an integrated gateway providing cellular telemetry and monitoring of up to 600 values from any device over a serial connection using Modbus RTU protocol
- Acts as a Modbus Master collecting and translating Modbus RTU data and making it available to web-based applications via a secure proprietary protocol
- All data is reported automatically to RemoteIQ™, the cloud-based website, upon a digital change-of-state or delta change for analog values
- Ideal for water and wastewater plants, gas compressor stations, hydro-electric plants, unattended plants, power sub-stations and virtually any industrial site that has smart controls and analyzers

#### FEATURES

- Digital and analog values are automatically reported on change-of-state to RemoteIQ for viewing status and alarm notification remotely
- Reliable hardware-based alarm notification from SCADA systems
- Easy programming of a large number of values to be monitored through an RS232 / 485 serial port and using a terminal emulating program, like Tera Term VT, and on RemoteIQ
- Digital values are read using either Read Coil function codes or Packed bits in a 16- or 32-bit word. When a digital value changes state for a user-specified number of seconds, it is reported to the web-based backend
- Digital values are written using the Write Coil function and automatically returned to the backend as a confirmation that the action was performed
- Analog values are read using 16- or 32-bit function codes, including Read Holding, Register and Float
- Non-float values can be converted to floating-point values in the Messenger by specifying bit-weights, offsets and signed or unsigned settings
- RemoteIQ provides a comprehensive view, system status, graphs, reports and provides critical alarm notifications for values reported by the Messenger 600



RemoteIQ website





## TECHNICAL DATA AND SPECIFICATIONS

System Conditions Reported	GPS coordinates for location Power Fail / Battery backup Geofence violation	
Modbus RTU	Up to 600 registers of mixed types	Modbus ID supported (1-247)
Digital Function Codes	Read Coil Write Coil	Read Status Read Packed 16- and 32-bit
Analog Function Codes	Read holding 16- and 32-bit Write holding 16- and 32-bit Read packed bits and holding	Read input 16- and 32-bit Read float (32-bit) Write multiple holding
Communications	North America: LTE CATM1 Worldwide: LTE CAT1	
Serial Ports	1 RS485, 1200-115200 Baud, Supports Modbus Master 1 RS232, 1200-115200 Baud, Supports Debug/Programming and Modbus Slave	
Digital Inputs	1 used for power fail notification	
Electrical	Operating power: 12 - 240 VAC to VAC to VDC power supply Sleep mode: less than 8 mA @ 12 VDC Monitoring mode: 40 mA @ 12 VDC LTE transmit mode: 400 mA peak @ 12 VDC	
Environmental	Industrial temperature range -40°F to 185°F (-40°C to 85°C)	
Physical Characteristics	15" DIN rail: 15" W x 6.5" D x 4.1" H NEMA 4X enclosure: 14.68" W x 7.47" D x 12.68" H Weight: NEMA 8 lbs. DIN 2.5 lbs.	
Certifications	FCC, IC, PTCRB and ATT approvals for end-user applications Operating vibration: exceeds SAE J1455 vibration levels Operating shock: exceeds SAE J1455 shock levels RoHS compliant	
Warranty	One-year limited warranty	

North America: +1.234.806.0018 | Sales.US@Cattron.com

Europe: +49.2151.4795.0 | Sales.EU@Cattron.com

UK: +44.1932.238121 | Sales.UK@Cattron.com

South America: +55.19.3518.7030 | Sales.BR@Cattron.com

Asia: Sales.CN@Cattron.com

[cattron.com](http://cattron.com)

Messenger\_600\_Datasheet\_Oct2020

Any information furnished by Cattron™ and its agents is believed to be accurate and reliable. All specifications are subject to change without notice. Responsibility for the use and application of Cattron products rests with the end user since Cattron and its agents cannot be aware of all potential uses. Cattron makes no warranties as to non-infringement nor as to the fitness, merchantability, or sustainability of any Cattron products for any specific or general uses. Cattron Holdings, Inc., or any of its affiliates or agents shall not be liable for incidental or consequential damages of any kind. All Cattron products are sold pursuant to the Terms and Conditions of Sale, a copy of which will be furnished upon request. When used as a tradename herein, Cattron means Cattron Holdings, Inc. or one or more subsidiaries of Cattron Holdings, Inc. Cattron™, corresponding logos, and other marks are trademarks or registered trademarks of Cattron Holdings, Inc. Other marks may be the property of third parties. Nothing herein provides a license under any Cattron or any third party intellectual property right.

