

# Aquavx™

## CLOUD-BASED MONITORING FOR MID-SIZED SYSTEMS

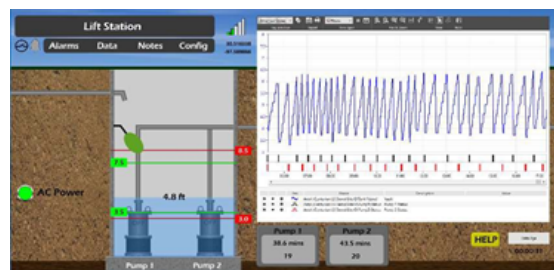
### INDUSTRIAL, MUNICIPAL AND COMMERCIAL APPLICATIONS

#### HIGHLIGHTS

- Aquavx (formerly Antx Aquavx Scout) is a field proven, reliable and cost-effective monitoring solution
- Standard I/O include digital, analog, relay and Modbus
- No networks to maintain, no engineering and no programming costs

#### FEATURES

- Local user interface features:
  - View run-times, cycles, levels, flow and totalized flow
  - Control pumps
  - View inflow and outflow totals and rainfall rate and volume
  - Dynamic scrolling display allows you to decide what data is shown on the display
  - View/change programming on the LCD display and view the event log
- Alarm notifications via email, text messaging and voice calls
  - Excessive run times or cycles, excessive or variation in pump run-times or cycles
  - Exceeding limits on tank levels, pressure, flow rates, motor amps
  - Power fail and low battery level
  - Loss of cellular or Modbus communications
  - Rainfall exceeds limit
- Scheduled and/or on-demand reports for run times, total inflow and outflow, alarm history and complete audit trail
- Powerful operator capabilities through local user interface
- 24/7 helpdesk support available for all programming and operational questions
- Local relays can be automatically controlled when any channel exceeds a pre-determined limit or condition
- Peer-to-peer communication between Aquavx and Messenger units enabling system wide controls
- Remote site viewing and management through RemoteIQ™ using mobile or desktop devices



Sample RemoteIQ™ Screen





## TECHNICAL DATA AND SPECIFICATIONS

<b>Analog Inputs</b>	Four analog inputs are capable of interfacing directly to 4-20 mA, 0-20 mA, 0-5V, 1-5V, signals Analog inputs can be flowmeters to provide flow rate and total flow
<b>Digital Inputs</b>	Ten dry contact/digital inputs are capable of interfacing directly to dry contacts or digital input signals with voltages up to 25 VDC. Any digital input can support pulses for rainfall or flowmeters (with flow rate and accumulated total flow)
<b>Relay Outputs</b>	Two relays are programmable to activate automatically when any channel goes into alarm, or upon local or remote request. The relay can deactivate automatically when all channels have returned to the normal condition, upon a programmable timer expiring or upon local or remote request.
<b>Modbus I/O</b>	20 Modbus RTU read coil/input status channels. Perform like physical digital inputs. 30 Modbus RTU read holding/register channels. Perform like physical analog inputs. 8 Modbus RTU write coil digital channels.
<b>Local Display</b>	View all current data in engineering units. Automatic rotating display of any data selected for quick viewing of complete system status including current alarms, values and signal strength.
<b>Cellular Modem</b>	CATM1 using ATT or Verizon
<b>Electrical Protection</b>	Solid state surge protection provided on digital input, analog input and serial port. All fuses are solid-state automatic resettable requiring no maintenance
<b>Enclosure</b>	NEMA 4X, flush mount or sub-panel mount.
<b>Environmental Limits</b>	Temperature: -22°F to 158°F (-30°C to 70°C) Humidity: 0-90% non-condensing @ 104°F
<b>Power Supply</b>	15 VDC, 1 A, DIN-rail mount included
<b>Relay Output Rating</b>	2 relays, 0.5A at 125 VAC each
<b>Dimensions</b>	Panel Mount: Front panel: 9.34"W x 6.72"H Enclosure: 8.2"W x 5.2"H x 3.6"D NEMA 4X: 11.83"W x 13.45"H x 6.31" D
<b>Weight</b>	Panel mount: 3.5 lbs. NEMA 4X: 10.5 lbs.
<b>Field Wiring</b>	All I/O wiring uses quick-disconnect pluggable connectors (14-22 AWG)
<b>Backup Battery</b>	12-hour minimum included
<b>Warranty</b>	One-year limited warranty for modem; two-year limited warranty for board

North America: +1.234.806.0018 | Sales.US@Cattron.com

Europe: +49.2151.4795.0 | Sales.EU@Cattron.com

UK: +44.1932.238121 | Sales.UK@Cattron.com

South America: +55.19.3518.7030 | Sales.BR@Cattron.com

Asia: Sales.CN@Cattron.com

[cattron.com](http://cattron.com)

Aquavx\_Datasheet\_Sept2020



Any information furnished by Cattron™ and its agents is believed to be accurate and reliable. All specifications are subject to change without notice. Responsibility for the use and application of Cattron products rests with the end user since Cattron and its agents cannot be aware of all potential uses. Cattron makes no warranties as to non-infringement nor as to the fitness, merchantability, or sustainability of any Cattron products for any specific or general uses. Cattron Holdings, Inc., or any of its affiliates or agents shall not be liable for incidental or consequential damages of any kind. All Cattron products are sold pursuant to the Terms and Conditions of Sale, a copy of which will be furnished upon request. When used as a tradename herein, Cattron means Cattron Holdings, Inc. or one or more subsidiaries of Cattron Holdings, Inc. Cattron™, corresponding logos, and other marks are trademarks or registered trademarks of Cattron Holdings, Inc. Other marks may be the property of third parties. Nothing herein provides a license under any Cattron or any third party intellectual property right.