



# Telemetry Pump Control

## Cattron™ Application Note

### COMPANY

---

Municipalities utilizing cellular-based controllers to monitor and manage pumps and pump stations.

### CHALLENGES

---

Customers using LC150 controllers are reporting that their existing telemetry systems utilizing 3G modems are no longer supported and that they are receiving limited to no factory support. Customers also indicate that voice alarm notifications, which continue to be a preferred method for critical alarms, are no longer supported by the factory, only email and text messages are sent. Customers rely on these systems to efficiently monitor and control their pumps and stations. Due to the lack of support and functionality of the LC150, they are actively seeking to upgrade or replace these systems in the field.

### SOLUTION

---

The Cattron Messenger BLE offers integrated telemetry and monitoring for managing remote sites that utilize these obsolete pump controllers. It supports devices connected via Modbus RTU or direct connection to digital analog signals with two-way communication on equipment. The Messenger BLE easily integrates into existing equipment in the field, such as the LC150 controllers, providing a cellular monitoring solution that utilizes our RemotelQ cloud-based platform for managing site data and critical alarms. Alarm notifications are available via voice, text and email. The RemotelQ platform provides visibility into equipment performance 24/7 from anywhere in the world on mobile devices and computers.

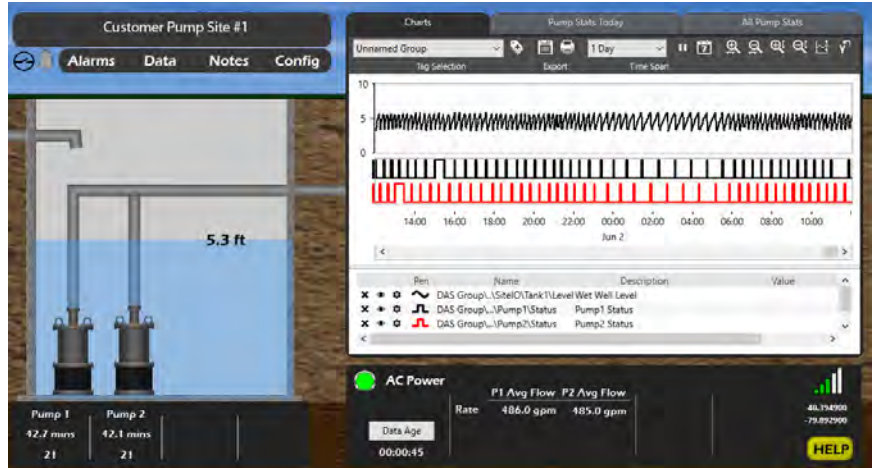
### CATTRON PRODUCTS

---

- Messenger BLE
- RemotelQ™

Learn more at [Cattron.com](http://Cattron.com).





Cattron's Messenger BLE integrated with LC150. RemoteIQ pump monitoring dashboard.



Learn more at [Cattron.com](http://Cattron.com).

**CONNECT. CONTROL. PROTECT.**

