

# RemotelQ™

## CLOUD-BASED ASSET TRACKING

### FOR MOBILE EQUIPMENT APPLICATIONS

#### HIGHLIGHTS

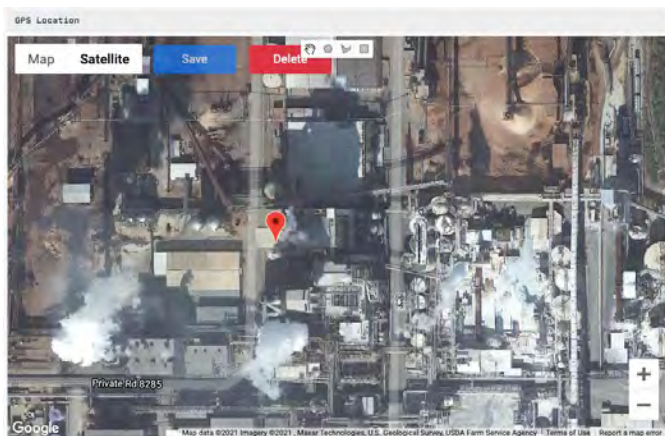
- The RemotelQ™ platform enables asset monitoring and tracking with VisiTek™ products
- GPS tracking with geofencing enables equipment visibility including notification when equipment leaves customer-defined boundaries
- Mobile-friendly cloud interface is ideal for smartphones or tablet use
- Smart technology provided visibility to single pieces of equipment or full fleets
- 24/7 monitoring reduces costs associated with equipment loss or theft
- Intuitive graphical display and real-time site data provide a quick glance as to status of the remote site(s) optimizing the ability to make operational decisions
- RemotelQ is a proven monitoring supplier with over 20 years of satisfied customers

#### FEATURES

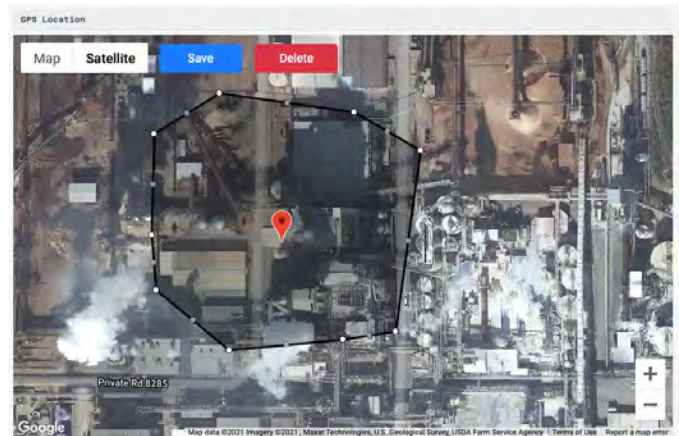
- Alarms Notifications - receive and acknowledge alarms via texts, voice and email
- Cloud-based Monitoring and Control – no IT infrastructure or licensing required and is accessible from any network connected device
- Dashboards – user-friendly graphical displays and data
- Secure – data transmission, access and storage are locked down from end to end
- Support – customer training and support spanning software and hardware option
- Wireless – cellular data transmission is included

#### MARKETS & APPLICATIONS

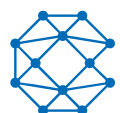
- Mobile equipment operators
- Mining operations
- Agriculture operations
- Equipment rental operators
- Oil and gas
- Compressors, generators, engines, motors or pump



Location tracking



Geofencing





## RemotelQ™ cloud-based software provides an easy, reliable and secure solution to track and manage assets.

### OIL & GAS PRODUCERS

Maintain 24/7 visibility of critical assets such as generators, light towers and tanks used to support fracking and water transfer wherever they are in the field.



### EQUIPMENT RENTAL OPERATORS

Continuously monitor and track single pieces of equipment or your entire fleet. Geofence alarms provide notification of unauthorized movement or theft from equipment yards or worksites.



### AGRICULTURE

Track and monitor location, temperature and vibration associated with engines and pumps used in irrigation and frost protection.



### MOBILE EQUIPMENT

View and monitor your on-highway or off-highway equipment such as loader cranes, concrete pumps, light towers, generators, rock breakers or specialty trucks.



### MINING

Remotely monitor heavy equipment, such as load haul dump machines, rock breakers, and generators or pumps used for dewatering in open pit and underground mining locations with limited visibility from anywhere in the world.



North America: +1.234.806.0018 | [Sales.US@Cattron.com](mailto:Sales.US@Cattron.com)  
Europe: +49.2151.4795.0 | [Sales.EU@Cattron.com](mailto:Sales.EU@Cattron.com)  
UK: +44.1932.238121 | [Sales.UK@Cattron.com](mailto:Sales.UK@Cattron.com)  
South America: +55.19.3518.7030 | [Sales.BR@Cattron.com](mailto:Sales.BR@Cattron.com)  
Asia: [Sales.CN@Cattron.com](mailto:Sales.CN@Cattron.com)  
Oceania: [Sales.AU@Cattron.com](mailto:Sales.AU@Cattron.com)  
[cattron.com](http://cattron.com)

RemotelQ\_MobileEquipment\_Datasheet\_May2021

Information provided on this datasheet by Cattron and/or its partners is to be used for reference purposes only. Cattron reserves the right to change specifications and product details on this datasheet without prior notice. Cattron™ and all associated logos or marks are trademarks of Cattron and/or its subsidiaries. All rights reserved.

