



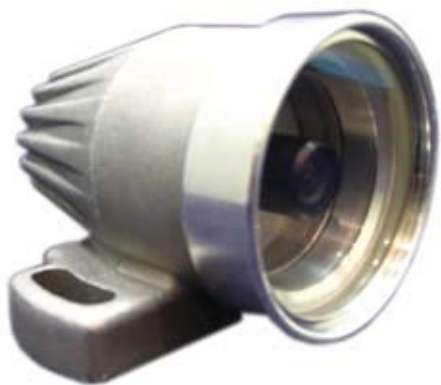
SIAMvvm

Vehicular Video Monitor



Video Monitor

- Assists operators of Low Profile LHDs in driving their vehicles in low ceiling mines
- Operators have a view of the front or the rear of the vehicle
- Driven by the transmission, the forward and reverse view is selected automatically
- Camera selection Indicator Lights.
- Manual Camera selection
- Internal Brightness, Contrast, Color and Hue Adjustments



Cameras

- Positioned to provide the best view
- Rugged to withstand the mining environment
- Clear images, B&W or Color
- Requires minimal lighting
- Easy to install
- Heavy duty cables, built to length

Features

- Automatic switching of front and rear cameras
- Manual camera selection capability
- Status lights indicate the camera in use
- Adaptable to any lighting conditions
- Adaptable to any vehicle using cables of appropriate length
- Non-obstructive monitor, recessed into the dashboard
- Monitor screen protected by long lasting anti-abrasive protection glass
- Choice of cameras: Color or B&W
- Sealed Enclosure, Anticorrosion
- Power washing resistant
- No maintenance required

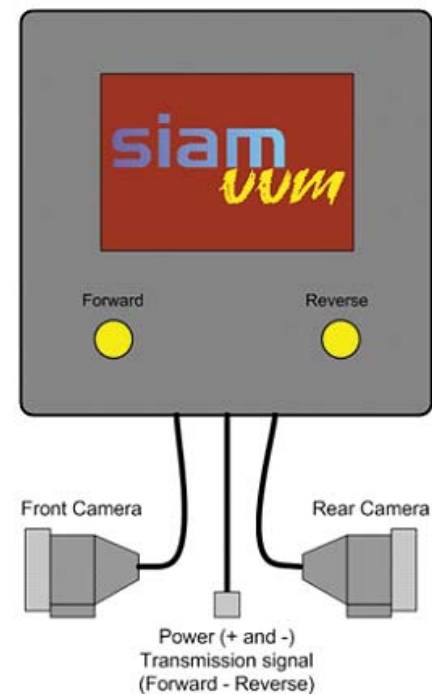
Benefits

- Assists drivers, no more blind spots
- Increases safety of personnel
- Prevents accidents
- Increases productivity
- Increases personnel's safety
- Decreases vehicle maintenance cost

Specifications

- | | |
|--------------------------------|---|
| • Monitor | LCD, Color, 6.8" diagonal, 12 Vdc |
| • Image adjustments | Color, Tint, Brightness and Contrast |
| • Overall enclosure dimensions | 9.5" X 9.5" X 2.25" (241 X 241 X 57 mm) |
| • Enclosure mounting cut-out | 8.0" X 8.0" (203 X 203 mm) |
| • Override push-buttons | "Forward" and "Reverse" |
| • F/R indicators | Yellow indicator lights built into the push-buttons |
| • Colour | Black, matte |
| • Protective glass | Lexan, MR-10 Abrasive resistant |
| • Power connector | Turk |
| • Input power | 16 to 30 Vdc, internal regulator |
| • B&W Camera | CCD, 1/3", auto-iris, 3.6 mm wide angle lens, 12 Vdc |
| Sensitivity | 0.05 Lux |
| Resolution | 420 TV lines |
| • Color Camera | CCD, 1/3", Auto-iris, 4.0 mm wide angle lens, 12 Vdc |
| Sensitivity | 1.0 Lux |
| Resolution | 380 TV lines |
| • Camera Housing | Nema 4 , cast alloy, Impact and power washing resistant |
| Cables | Variable length, protected by PMA flexible conduit, |
| Connectors | Circular ITT Cannon (Military), straight or 90 degrees |
| Glass | ½ inch (12.7mm) thick reinforced glass |

*Specifications subject to change without notice. Consult factory for verification.



www.cattrongroup.com

Cattron Group International World Headquarters (Sharpsville, PA, USA)
ISO 9001:2000 Registered Tel: (+1) 724-962-3571 sales@cattrongroup.com

Cattron Group International (Escondido, CA)
Tel: (+1) 760-737-7800 sales@cattrongroup.com

10/07-1000

Cattron-Theimeg Canada Ltd. (Georgetown, ON)
ISO 9001:2000 Registered Tel: (+1) 905-873-9440 salescdn@cattrongroup.com

Cattron-Theimeg UK Ltd. (Walton-on-Thames, UK)
BSEN/9001:2000 Registered Tel: +44(0)1932-247 511 sales@cattronuk.com

Cattron-Theimeg Americas Ltda. (São Paulo, Brazil)
Tel: (55) 19-3243-7803 cattronamericas@cattrongroup.com

Cattron-Theimeg Europe GmbH & Co. (Mönchenglabach, Germany)
ISO 9001:2000 Registered Tel: (49) 2161 6363-0 info@theimeg.de

Cattron-Theimeg Africa (PTY) Ltd. (Johannesburg, South Africa)
Tel: (27) 11-425-1123 cattronafrika@cattron-theimeg.com